



## **RCP COMMERCIAL PVT LTD** **COUNTRY REPRESENTATIVES**

### **RCP COMMERCIAL GLOBAL NETWORK**



RCP COMMERCIAL Global Network (RCGN) works through an elaborate network of professional associates in different countries who have been closely working with either RCPC India or any of its subsidiaries over a period of time. They are our partners in business deals generated from their respective countries. The need to consistently grow the network to cover new geographical locations has resulted in adding new members to this fast expanding network. Essential requirements to become a RCGN “Country Representative” are as follows:

- a) A verifiable office address with a Land Phone number (the premises can be either leased or owned)
- b) A live internet connection with 24x7x365 connectivity, a mobile phone
- c) A valid Bank Account in his/her own name
- d) A valid Passport issued in that country
- e) A professional resume fully updated with present photograph
- f) A refundable deposit of US \$4,500.00

Country Representatives should preferably be from a consulting and Business facilitating back ground. **RCP COMMERCIAL Global Network** covers multiple sectors of economic activities includes :



# RCP COMMERCIAL PVT LTD COUNTRY REPRESENTATIVES

**We are delivery consultants and construction experts**

## **Expert Project Management Consultancy Services for Construction Projects**

Our team of experts specializes in providing top-notch construction project management consultancy services. We can deliver the most complex programmes and projects worldwide. We understand how to deliver projects of every scale from start to finish. That's what makes us different.



## **PRE - DURING - POST CONSTRUCTION**

**OUR ENGINEERS HAVE GOT IT ALL COVERED**

**Project Management Consultancy (PMC)** is the extended arm of the developer and the role mainly involves overseeing the documentation, quality inspections, project schedule tracking, and billing activities until the project's handover.

Our team of project management consultants has extensive experience and expertise in addressing project issues and risks. We possess the knowledge and skills necessary to provide you with effective strategies for ensuring project success. We are dedicated to ethical business practices, prioritizing integrity and transparency. You can trust us to deliver on our promises provide you with solutions to mitigate them.

**Smooth Execution:** We specialize in ensuring the smooth execution of construction projects. From planning to implementation, we have the knowledge and skills to overcome any hurdles that may arise.



## **RCP COMMERCIAL PVT LTD** **COUNTRY REPRESENTATIVES**

**Project Planning and Strategy:** Our engineers develop a comprehensive project plan, including timelines, resource allocation, and risk management strategies. We identify potential challenges and p

**Project Design and Engineering:** With our expertise in civil, mechanical, electrical, and other engineering disciplines, we can help you design and execute your project with precision. We ensure that all engineering work meets regulatory standards and industry best practices.

**Vendor Management:** Our team handles all vendor management activities, including procurement, contract negotiation, and performance monitoring, to ensure you have the right vendors on board to deliver quality work.

**Cost Estimation and Control:** Our project costing and estimation services accurately forecast project costs and provide ongoing cost control to prevent budget overruns. We offer value engineering, tendering support, change management, and regular cost reporting.

**Contract Administration:** We assist with contract drafting GCC and SCC, finalization of terms and conditions, contract management, variations, extensions, payments, claims management, and closeouts.

**Efficient Quality Assurance and Control:** With a focus on quality, we establish inspection and testing plans, perform audits, implement quality control procedures, and ensure compliance with specifications and regulations. Our engineers implement robust quality control measures to ensure that all work meets the highest standards. Regular inspections and audits are conducted to identify any deviations and take corrective actions, ensuring the highest quality in your construction project.

**Reporting and Documentation:** Our project team provides you timely reports and

comprehensive documentation throughout the project lifecycle. You will have full visibility into project progress, costs, and any issues that may arise. Our transparent reporting keeps you informed every step of the way.

**Safety Management:** Safety is paramount. We conduct hazard identification and risk assessments, implement safety procedures, conduct training, and monitor project sites to prevent accidents.

**Timely Completion:** Time is of the essence in construction projects. Our engineers are committed to meeting deadlines and delivering projects on time, without compromising on quality.



# RCP COMMERCIAL PVT LTD

## COUNTRY REPRESENTATIVES

**Team and Stakeholder Management:** With excellent communication skills and a collaborative approach, we bring teams and stakeholders together to build strong working relationships focused on achieving project goals.

The core principle of “Ownership” is demonstrated on all project sites by deploying resources with our In-House recruitment team and with quick deliveries. We ensure that the construction projects are completed on time, within budget, and to the required standard.

## PRE CONSTRUCTION

### General Management

1. Conduct Project Kick-off meeting
  2. Establish Roles and Responsibility (RASI Matrix)
- Prepare and finalize Project Charter

### Design Management & Value Engineering

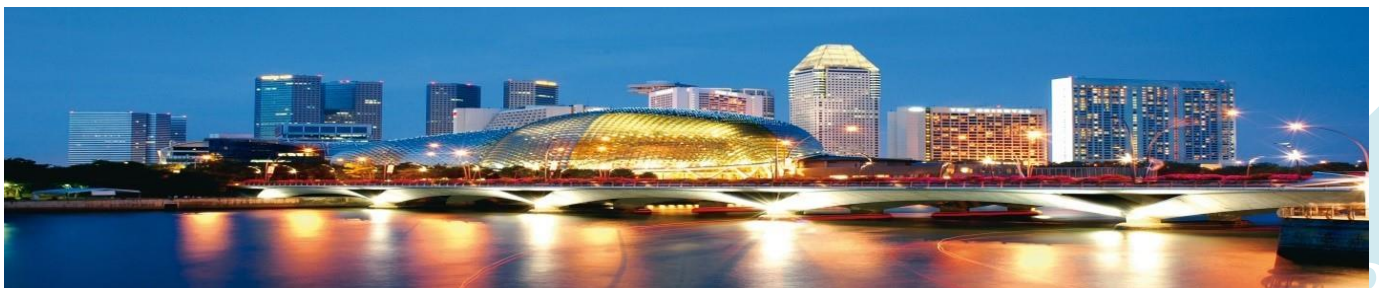
1. Conduct Constructability review
  2. Participate in design workshop
- Review quality of issued drawings
3. Conduct value engineering workshop
  4. Maintain register and issued drawings

### Contracts & Bid Management

1. Review of General Condition Contract (GCC) & Special Condition Contract (SCC)
2. Assist in finalizing contracting strategy
3. Pre-qualify contractors on technical parameters
4. Provide recommendations on award of contracts

### Project Baseline Schedule

1. Prepare Construction Master Schedule
2. Prepare & finalize Project Work Breakdown Structure
3. Procurement Schedule





# **RCP COMMERCIAL PVT LTD**

## **COUNTRY REPRESENTATIVES**

### **Safety & Quality Management**

1. Review & Finalisation of project quality plan
2. Setting quality control procedures for project
3. Review & approval of construction methodology
4. Review of project safety plan
5. Setting safety procedures for project

### **DURING CONSTRUCTION STAGE**

#### **Execution and Coordination**

1. Prepare site logistics plan
2. Supervise construction activities
3. Suggest construction modification due to site conditions
4. Review & assist in approval of changes during construction
5. Co-ordinate with all project stakeholders
6. Conduct project periodic progress review meetings

#### **Time Management**

1. Review & Approve detailed WBS (work breakdown structure)
2. Review & Approve contractor's baseline construction schedule
3. Periodical updates against baseline schedule (MSP/Primavera P6)
4. Prepare Recovery/Catchup schedules

### **Contracts & Bid Management**

1. Manage contractual submittals from contractor/(s)
2. Review & assistance in preventing / resolving claims
3. Issue work completion certificate
4. Track purchase of long lead items

#### **Quality Management**

1. Review & finalize Project Quality Plan
2. Attend Request for Inspections (RFIs) from contractor/(s)
3. Review & approve method statements
4. Check quality of incoming material
5. Monitor & assess workmanship
6. Issue quality assessment certificate
7. Check quality of completed work





## **RCP COMMERCIAL PVT LTD** **COUNTRY REPRESENTATIVES**

### **Safety Management**

1. Conduct safety walks
2. Conduct safety meetings and TBT (Tool Box Talk) period
3. Ensure the adherence to EHS norms and rules by all conductors & stakeholders

### **MIS and Reporting**

1. Project progress periodically
2. Krystal DMS – Online Database Management System (Example: MS Sharepoint)
3. Maintain and manage documentation of the project

### **POST CONSTRUCTION / CLOSE OUT STAGE**

#### **Snaglist Management**

1. Verify and approve Punch list/ Snag list items
2. Joint Take Over of the project

#### **Testing and Commissioning**

Confirm, validate testing & commissioning of project deliverables in accordance with QC procedures

### **Project Close-Out Documentation**

1. Obtain close-out deliverables from the contractor
2. Submit final close-out report
3. Organize training on installed equipment
4. Final hand over to client's facility manage team
  - Design Management-Strong engineering capabilities(Design+ Construction+Value Engineering)
  - In-House Expertise in Project Management Functions (For example: Costing, Rebar Detailing etc)
  - Expert Advise on Contracts Management & Administration
  - Quick & Timely Mobilisation of Resources
  - Technology Driven App based Quality Control reporting & RFI Management
  - Personal Expert Advise and Inputs from Senior Professionals
  - Optimal Resource Structure



# RCP COMMERCIAL PVT LTD

## COUNTRY REPRESENTATIVES

### STANDARDS & SOFTWARE'S:

- PMBOK (Project Management Body of Knowledge)
- Microsoft Share point
- Proge CAD
- Primavera P6 & MS Project
- ERP

## REBAR DETAILING

**Get Shop Drawings, Fabrication Drawings, and Estimation Quickly and Accurately.**

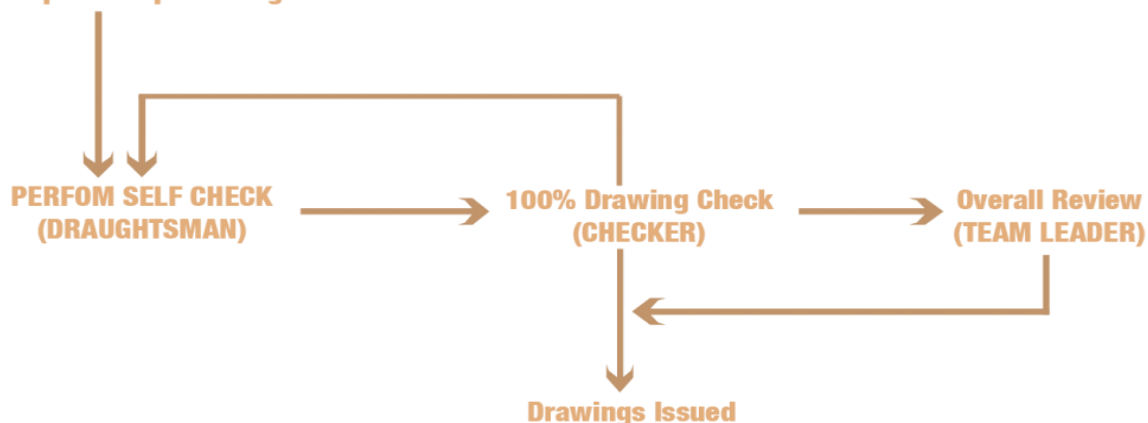
With our rebar detailing service, avoid **constructability issues**, costly delays, and rebar wastage. We enable structural engineers, rebar fabricators, and steel erectors for optimized construction of reinforced concrete structures.

**Save efforts and time:** Get error-free shop drawings tailored for contractors, subcontractors, manufacturers, and fabricators.

- Competitive and custom pricing
- On time delivery
- Proper communication with clients
- Flexible approach
- Large team of chartered structural engineers

## METHODOLOGY

### Prepare Shop Drawing





# RCP COMMERCIAL PVT LTD

## COUNTRY REPRESENTATIVES

Whether the project size is **1 ton or 100,000 tons**, be rest assured that our team will deliver the highest quality of reinforcement detailing services.

### Target Sector

- Residential
- Industrial
- Commercial
- Hotels
- Roads & Bridges
- Substations
- Underground Metrol Rail
- Powerplants

### Experience in International Standards

American Concrete Institute (ACI135, AC1318)

Euro Code (EN1992-1-1)

British Standard (BS8666, BS8110)

Australian (AS 3600)

Indian (IS2502, IS456, IS13920, SP34)

We offer structural BIM services using the necessary software and tools that help analyze the designs and drawings with proper calculation and markup. It is an essential set of services that requires accurate markup and necessary calculations for the work. To ensure 100% authenticity of the work we have the details that is perfect for the project.

**RC Detailing Service provided across geographies**

### How we work

#### Plan Construction Techniques / Design Intent referring to the Shop Drawings

#### How we work:

- **Receive Project-specific information** which includes reinforcement summaries, construction programs, pour sequence, location of construction joins, and project deadlines.
- After having a **detailed study of the project** with given standards, if any data is missing, we raise query to the client for RFI (Request for the information).
- Mutually agreeing to your delivery programme; we then provide you with a **cost estimate for our deliverables**.
- Two-stage checking involved – Firstly, our detailing work is checked in-house to ensure high-quality is maintained by the detailer; and then secondly checked by our **chartered structural engineer** before being delivered to you.



# RCP COMMERCIAL PVT LTD

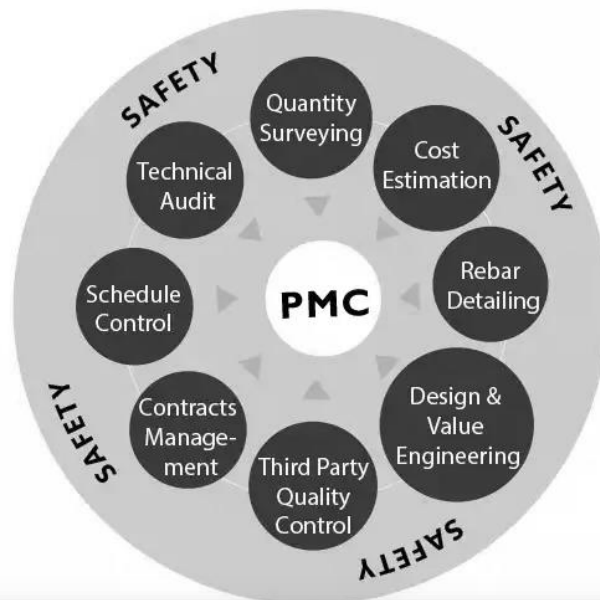
## COUNTRY REPRESENTATIVES

- **Submission of the shop drawings** and BBS as per the committed date for further approval from the client with quality checks.
- **Reinforced Concrete details (RCD) and bar bending schedules** is presented with title block and drawing numberings to suit your project requirements.
- All work is executed under the supervision of chartered structural engineers.

**Our Rebar Detailers are experts at**

- Rebar shop drawings Rebar 2D modeling Bar listing in ASA format
- Total rebar estimation Foundation details Footing detailing
- Bar bending schedules Roof truss and joint details Concrete masonry detailing
- Retaining walls detailing Quality take-offs & As-built drawings

Get an accurate rebar estimation for your project bids with our rebar takeoff service. We deliver accurate rebar placing drawings for Foundations, Superstructures, Bridges, Viaducts, Marine terminals, Power plants, Wastewater treatment plants, Mass transit systems, highways, Public schools, etc.



**Design Management-Strong engineering capabilities(Design+ Construction+Value Engineering)**  
**In-House Expertise in Project Management Functions (For example: Costing, Rebar Detailing etc)**  
**Expert Advise on Contracts Management & Administration**  
**Quick & Timely Mobilisation of Resources**  
**Technology Driven App based Quality Control reporting & RFI Management**  
**Personal Expert Advise and Inputs from Senior Professionals**  
**Optimal Resource Structure**



## **RCP COMMERCIAL PVT LTD** **COUNTRY REPRESENTATIVES**

Country Representative's knowledge about the local laws pertaining to consulting Business Facilitation is desirable. Knowledge of the local economy and market is a must. He/she should possess good communication and interpersonal skills. It is important for all country representatives to collect and maintain as much information as possible vis- à-vis a particular business sector as well as a particular client (individual/company/corporation/institution). Such information must be organized in an easy-to-use format so all other Country Representatives of RCPC can use this information without doubt or difficulty to find the best match at the shortest notice.

2. "Outsourcing & Off shoring" being our claimed area of expertise, we look to achieve greater reach in terms of both expertise as well as geography. We generally do not intend to appoint more than one "Country Representative" in a particular country. However, this rule may sometimes be altered to accommodate multiple representatives depending on the country size. The Country Representative is responsible for systematically building up and maintaining a local network of supporting professionals who can regularly participate in the activities of S RCP COMMERCIAL Global Network.
3. Every Country Representative is expected to develop and build around the basic strength of RCP COMMERCIAL Global Network – connectivity. Our strength is our ability to connect to a particular situation quickly and effectively. Our experience shows a larger number of clients from numerous business sectors keep adding to an ever growing client base because of this.

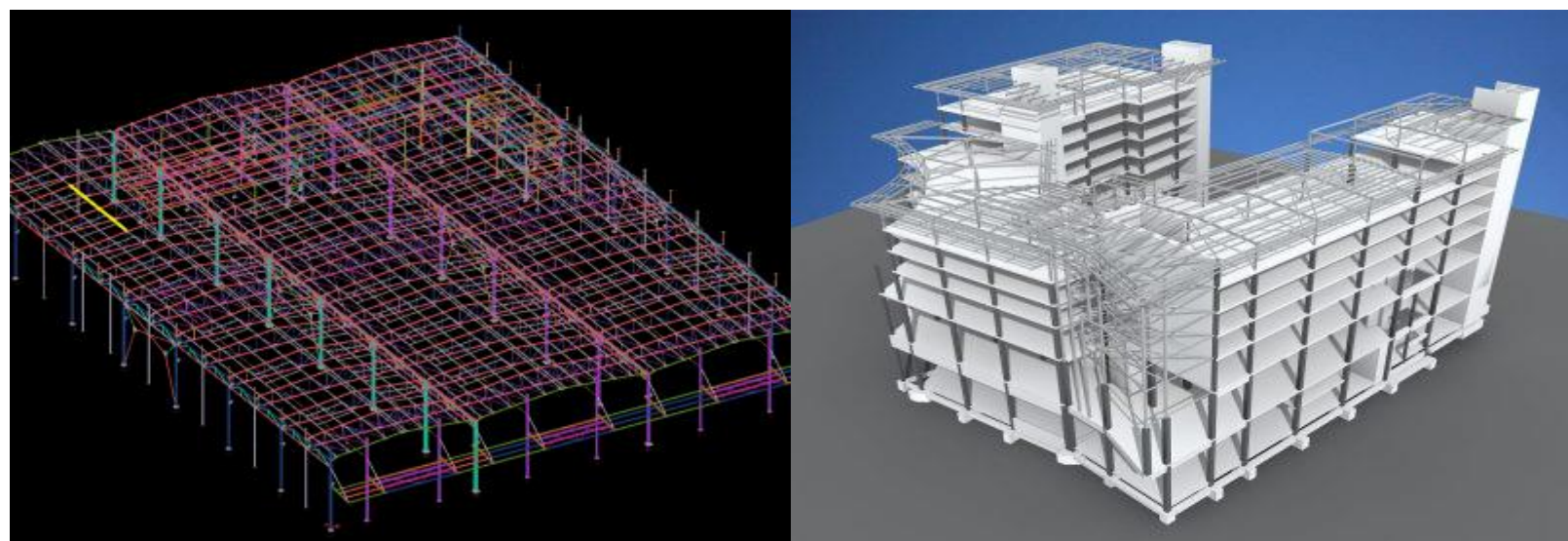


## **RCP COMMERCIAL PVT LTD** **COUNTRY REPRESENTATIVES**

4. Our clients expect quick and efficient results. They generally approach us because they are unable to source their business requirements locally at terms most conducive to their businesses.
5. Each country office has two sets of clients: those who need services (through RCPC) from other parts of the world and those who want to provide their goods and services to our clients in other countries. The point is to carefully develop both sets of clients.
6. Each Country office generates given targeted revenue.

The CR will play a key role in developing and leading RCPC's strategy for his region and identifying new programming opportunities. There will be a particular focus on identifying local partners and securing Increase leads Having Project management experience working or good contact within the rail, transportation, underground, tunnelling, civil engineering and construction industry with a history of being point of contact between clients, contractors, consultants and external parties; ensuring projects are compliant with relevant regulations and codes; managing vendor relationships ensuring timely delivery of information and services Strong understanding of the construction landscape as it relates to vendors, processes and management.

Competent in Microsoft Office





# RCP COMMERCIAL PVT LTD

## COUNTRY REPRESENTATIVES

Email us your Expression of Interest to be a Country Representative at

[info@rcpcommercialin.or](mailto:info@rcpcommercialin.or)

### **We are locally rooted and globally connected**

Our localised team of technical experts share deep insights in delivering solutions meeting the diverse needs of our clients. Through our globally connected teams, we have the expertise to tap into solutions that are beyond geographic boundaries.

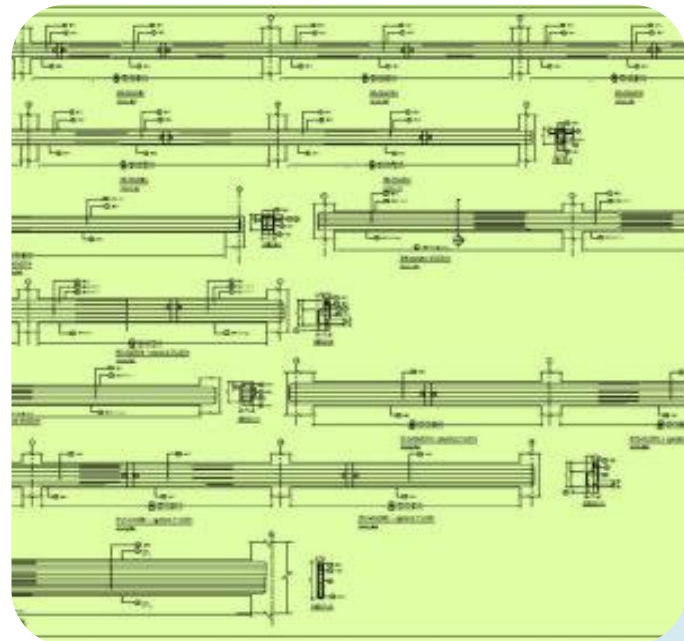
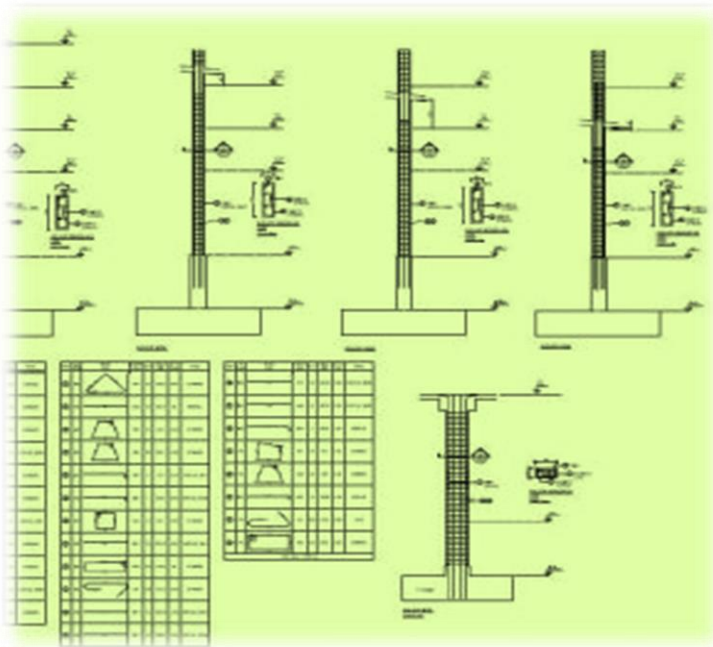
### **We are highly client centric**

Through our focused execution strategies we always strive for client delight, where the focus is on providing fit for purpose yet sustainable business solutions that have a positive impact on the lives of everyone we touch.

Our approach is based on execution excellence, where we leverage our global knowledge to provide innovative solutions through multi-disciplinary teams.

### **We are an experienced and trusted partner**

Our partnership with our clients and partners goes way beyond providing technical solutions and is based on the core foundation of trust and ethics .





# RCP COMMERCIAL PVT LTD

## COUNTRY REPRESENTATIVES

### Countries we will serve

USA UK Canada Australia New Zealand Europe South Africa Gulf Asia

**Asia** CHINA | HONG KONG | MACAO | KOREA | JAPAN | INDIA MALAYSIA | PHILIPPINES | SINGAPORE | THAILAND | VIETNAM Russia

**Gulf** Kuwait | Oman | Saudi Arabia | UAE | Qatar | Bahrain | Iraq

**South Africa** CAPE TOWN | WESTERN CAPE | NORTHERN CAPE | EASTERN CAPE | NORTH WEST | KWAZULU-NATAL | FREE STATE | LIMPOPO MPUMALANGA | GAUTENG

**Europe** BELGIUM | DENMARK | FINLAND | FRANCE | GERMANY | ICELAND | IRELAND | ITALY | NETHERLANDS | NORWAY | PORTUGAL | SPAIN | SWEDEN | SWITZERLAND | AUSTRIA | BOSNIA | HERZ | BELARUS | BULGARIA | BULGARIA | CZECH | ESTONIA | GEORGIA | GREECE | HUNGARY | LITHUANIA | MOLDOVA | MONTENEGRO | POLAND | ROMANIA

**Canada** Alberta | British Columbia | Manitoba | New Brunswick | Newfoundland and Labrador | Nova Scotia | Nunavut | Ontario | Prince Edward Island | Quebec | Saskatchewan | Yukon | Edmonton | Victoria | Winnipeg | Fredericton | St. John's | Yellowknife | Halifax | Iqaluit | Toronto | Charlottetown | Regina | Whitehorse

**UK** ABERDEEN CHESTER HEREFORD NORWICH ST-ASAPH ARMAGH CHICHESTER NOTTINGHAM OXFORD STIRLING WESTMINSTER LANCASTER LEEDS PETERBOROUGH SUNDERLAND BIRMINGHAM LEICESTER WELLS MANCHESTER CANTERBURY SOUTHAMPTON EDINBURGH LIVERPOOL

**USA** Alabama Alaska Arizona California Colorado Delaware Florida Georgia Hawaii | Idaho Indiana Louisiana Maryland Massachusetts Michigan Mississippi Missouri Montana New Hampshire New Jersey New Mexico New York Ohio Pennsylvania Texas Virginia Washington West Virginia

## Your Partner

Contact ours country representative

Office for information about

Project management services

